

Clerity Service Builder



Highlights:

- Assemble multi-step, multi-operation composite business services quickly from mainframe and open systems assets
- Exploit UniKix TPE, IBM® CICS®, IBM® IMS®, TN3270, Web services and native data transaction access capabilities while eliminating the need for middle-tier servers
- Deploy services as Web services or mainframe-based callable services
- Leverage mainframe and open systems developers; no coding skills required
- Deliver flexible, platform independent deployments on UNIX®, Linux®, Mainframe and Microsoft® Windows® based platforms

Quickly extend your SOA ecosystem

Mergers, acquisitions, and organic growth have left many organizations with a range of applications and databases to manage. These disparate systems need tight integration to effectively participate in a Service Oriented Architecture (SOA) environment. Clerity™ Service Builder provides the foundation to enable time-tested legacy applications and open systems workloads to actively engage in SOA initiatives. With an intuitive development environment, a secure high performance Simple Object Access Protocol (SOAP) processor, and a central repository for Web Services Description Language (WSDL) discovery, Clerity Service Builder ensures that all systems in your data center equally participate in providing dynamic enterprise-class business services going forward.

Build mainframe and open systems Web services with ease

With Clerity Service Builder, your existing staff can quickly assemble and deploy multi-step, multi-operation composite business services from 3270-based IBM CICS transactions, IBM IMS applications, UniKix™ Transaction Processing Environment (TPE) regions, COMMAREA-based applications, as well as native data Web services. By providing Callable services, IBM CICS, IBM IMS, and UniKix applications can easily consume Web services as well.

Clerity Service Builder includes robust source control features and flexible deployment options, enabling you to easily govern and manage projects. The two central components of Clerity Service Builder are Clerity™ Service Builder Studio and Clerity™ Service Builder Server. Clerity Service Builder Studio provides the orchestration tool to compose business services and Clerity Service Builder Server provides the powerful runtime environment to execute compositions.

Clerity Service Builder Studio

Clerity Service Builder Studio is an intuitive drag-and-drop development tool that allows developers to use any existing mainframe transaction, application, or data source, as well as external Web services and non-mainframe assets together to design SOAP Web services.

With Clerity Service Builder Studio no special understanding of SOAP, XML, WSDL, or HTTP protocols is required. Terms familiar to mainframe developers have been included to allow for rapid development of Web services from legacy systems, and services can be created without ever having to write any program code.

Visual building block approach

Clerity Service Builder Studio is simple to learn and operate. As depicted in Figure 1, *Clerity Service Builder Studio Screenshot*, the software features a graphical environment that easily orchestrates building-block functions into business services by providing an end-to-end representation of application logic and data flow.

Developers define inputs and expected outputs, then design a Web service using component icons. The end result is a graphical application design from the Web service inputs to the final Web service response. With the powerful visualization and orchestration features included in Clarity Service Builder Studio, developers can build business services with the level of granularity desired.

Included tools such as a bundled FTP client for importing copybooks and BMS macros from file systems make Clarity Service Builder Studio even more productive. Once the new service is complete, a fully integrated test and trace harness is provided to exercise and inspect the newly created service.

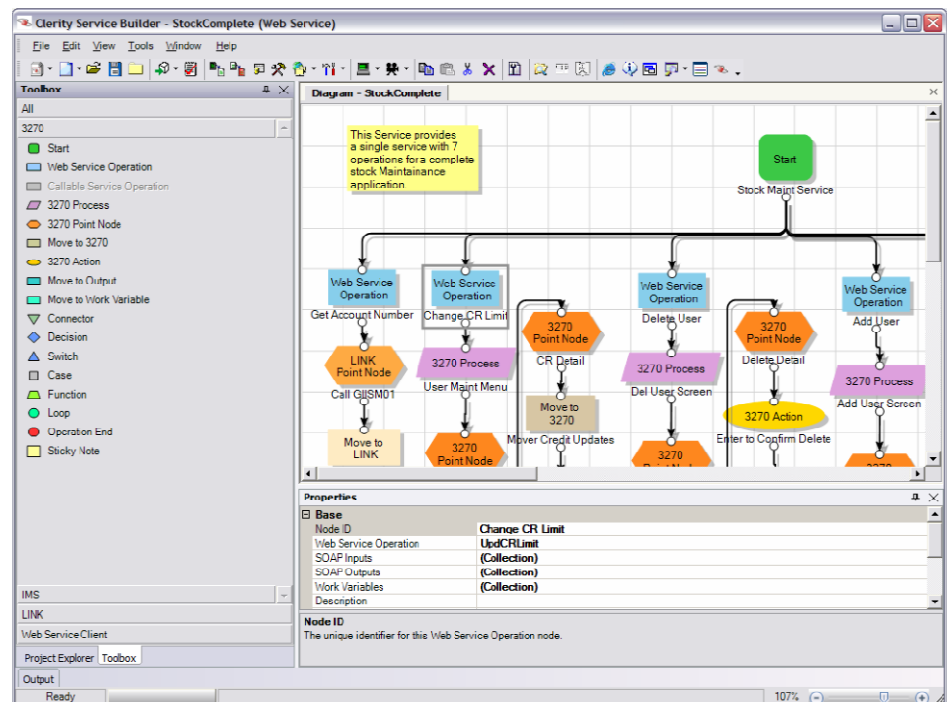
Clerity Service Builder Server

Clerity Service Builder Server provides the runtime environment to process information published by Clarity Service Builder Studio. The server environment consists of a high-performance SOAP processor, a business service flow processor, and a central repository for WSDL discovery. Clarity Service Builder Server receives SOAP requests, invokes the business service flow as defined in Clarity Service Builder Studio, and formats the SOAP response.

Clerity Service Builder Server is pre-integrated with key technologies to make generated services instantly recognizable and accessible within an SOA environment.

Figure 1. Clarity Service Builder Studio Screenshot

Clerity Service Builder Studio provides an intuitive environment for mainframe and non-mainframe programmers to quickly develop composite business services. As shown in this screenshot, several legacy operations can easily be collapsed down to a single callable service with Clarity Service Builder.



Specific facilities are included with Clerity Service Builder enabling generated services to be automatically:

- Registered into a Universal Description, Discovery and Integration (UDDI) repository.
- Managed by a Web service management tool.
- Consumed by a business process execution language (BPEL) or business process management (BPM) process.
- Included as another service on an Enterprise Service Bus (ESB).

Flexible, high performance deployment

By leveraging native data access capabilities, Clerity Service Builder Server eliminates the need for middle-tier servers and offers platform independent deployment. Services can be published and executed on a variety of platforms including Linux, UNIX, Microsoft Windows, IBM® z/OS®, and Linux on IBM® System z® server systems.

Because Clerity Service Builder does not rely on code generation to build services, workloads can be run where it makes the most sense at any given point in time, a key factor to delivering high performance in a complex, high-volume enterprise infrastructure. In addition to making it easier to build and deploy services, the no-code generation approach of Clerity Service Builder streamlines maintenance and eliminates heavy rebuilding and redeployment cycles when code changes occur.

The value of composite services

Implementing composite services can unlock exponential value from your existing application assets. If your organization is opening up systems to the Web and mobile devices, instead of having users step through several screens and perform successive data base calls to retrieve desired information, many functions can be orchestrated together into a single service call. This eliminates the potential for poor performance and multiple points of failure. The key to success is identifying the true business service that is hidden beneath the green screen or COMMAREA application.

Comprehensive legacy investment and modernization solutions

Whether your organization is following a strategic top-down approach to SOA or a tactical bottom-up method, Clerity Service Builder provides the development and deployment tools for a successful implementation.

Clerity Service Builder is part of a larger suite of migration and modernization offerings from Clerity that enhance, extend, and transform legacy assets. Clerity recognizes that companies have significant investments in core applications and procedures and provides a wealth of low risk, high value solutions and technology to reduce IT costs without sacrificing current functionality and service level agreements.

Find more details about these solutions at www.clerity.com.

About Clerity

Clerity is a leading full-service provider of legacy migration, modernization, and optimization solutions. Drawing from over 16 years of experience, Clerity recognizes that companies have significant investments in core applications and procedures and provides a wealth of low risk, high value tools, technology, and services to reduce IT costs without sacrificing current functionality and service level agreements. Headquartered in Chicago, Illinois with offices worldwide, Clerity has customers in all in major countries, including some of the largest financial services ISVs and Fortune-class end users.

Learn how Clerity can provide an evolutionary path forward for your application and data environments at www.clerity.com.



9930 Derby Lane, Suite 202 • Westchester, IL 60154
Phone 1-888-2-REHOST (or 1-630-981-6100)

© 2010 Clerity Solutions, Inc. All rights reserved. Clerity and UniKix are trademarks, or registered trademarks, of Clerity Solutions, Inc. in the United States and other countries.

IBM, CICS, IMS, System z, and z/OS are trademarks or registered trademarks of International Business Machines Corporation in the United States, other countries, or both. All other marks are the property of their respective owners.