

Clerity Map Editor



Highlights:

- Display and modify existing standalone BMS files, as well as BMS files with associated copybooks, on cost-effective open systems
- Generate new BMS files with associated COBOL Copybooks
- Leverage an intuitive GUI interface requiring minimal learning curve for mainframe or non-mainframe personnel
- Reduce personnel transition and end-user retraining requirements post migration

A complete application development environment for open systems

Mainframe migration and modernization solutions from Clerity safely extend the flexibility and competitive economies of scale of open systems to legacy applications. By preserving existing investments and minimizing end-user impact, Clerity helps organizations lower total cost of ownership (TCO) by as much as 70% and rapidly move to new target environments.

With Clerity™ Map Editor, developers transitioning to open systems can continue to develop and deploy familiar 3270 “green screen” end-user interfaces leveraging Basic Mapping Support (BMS). Clerity Map Editor provides a convenient graphical user interface (GUI) for screen editing and maintenance that can be run on any platform that supports Java Runtime Environment (JRE) 6 or greater. With Clerity Map Editor, developers can quickly update and generate BMS maps and properly enable them for use within an IBM® CICS® application server or UniKix™ mainframe rehosting software environment.

BMS generation made easy – no coding skills required

Clerity Map Editor offers screen editing and BMS generation capabilities similar to Screen Definition Facility (SDF) II on the mainframe. Leveraging intuitive menus and a GUI interface, developers can edit Mapsets, Maps and Field panels on existing screens or develop new screen interfaces as required.

The primary features of Clerity Map Editor include:

- Displaying and modifying existing standalone BMS files.
- Displaying and modifying BMS files associated with COBOL copybooks.
- Generating new BMS files with associated COBOL copybooks.

Clerity Map Editor supports 3270 terminal types 2, 3, 4, and 5. BMS modules containing field structures through COBOL copybooks are also supported.

Because Clerity Map Editor displays a WYSIWYG (what you see is what you get) view of the actual 3270 maps being generated, no knowledge of BMS macro coding is required to use the product. This makes Clerity Map Editor an ideal tool for programmers regardless of whether or not they maintained screens on the previous legacy system. To enhance developer productivity, predefined attributes can be set for individual fields, enabling users to avoid re-entering frequently used attributes.

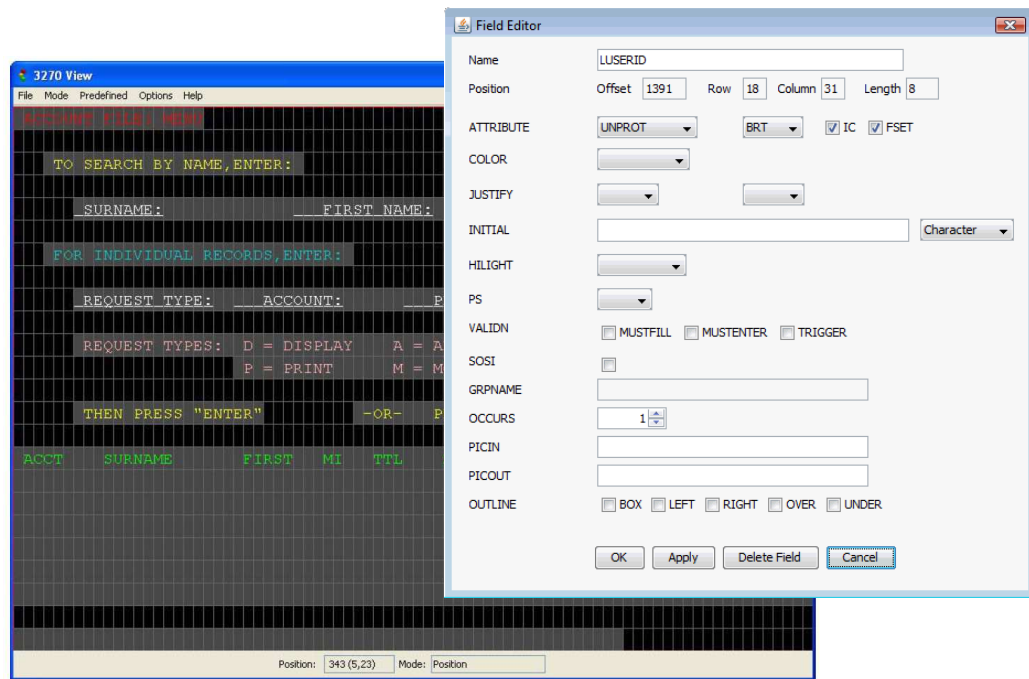


Figure 1. Clerity Map Editor Screen Shots

Figure 1, *Clerity Map Editor Screen Shots*, illustrates the field definitions that can be set as well as the 3270 View for WYSIWYG development.

Clerity Map Editor also saves production server cycles by providing offline development environment. Maps can be developed and generated on Microsoft® Windows®, UNIX® or Linux® based system supporting JRE 6.0 or greater

Once a Mapset is edited or generated and then saved, two files are created: the BMS file itself (the Mapset file with a .bms extension) and the COBOL copybook. The BMS file can then be assembled using the UniKix *kixbms* utility to create the physical Map file. The copybook can then be included in the COBOL program at compile time.

One of many options – evolve at your own pace

Clerity Map Editor is one tool among many options Clerity offers for editing, developing and maintaining end-user interfaces. If your organization is looking to further evolve existing applications, Clerity has a range of Web-enablement and modernization tools that may be appropriate:

- Clerity™ Web Connect: lets you rapidly transform 3270 green screen applications into modern, Web-based programs while leaving underlying business logic and data processes unchanged.
- Clerity™ 3270 Pathway software automatically generates Java code to navigate concurrently accessed multiple back-end applications on different hosts to present results in a single Java application.

By providing a range of end-user options, Clerity puts the pace of evolution in your hands. Learn more at www.clerity.com.

9930 Derby Lane, Suite 202 • Westchester, IL 60154
Phone 1-888-2-REHOST (or 1-630-981-6100)



© 2010 Clerity Solutions, Inc. All rights reserved. Clerity and UniKix are trademarks, or registered trademarks, of Clerity Solutions, Inc. in the United States and other countries.

IBM and CICS are trademarks or registered trademarks of International Business Machines Corporation in the United States, other countries, or both. All other marks are the property of their respective owners.