

# UniKix Manager Software



## Highlights:

- Protects the value of transaction processing environments by enabling efficient system resource use
- Maximizes performance and availability while minimizing bottlenecks
- Makes it easy to determine system status, processing rates, and potential configuration enhancements
- Offers a range of data representation options and graphical readouts; monitors and reports a wide range of parameters in real time
- Allows users to customize and clone display windows for quick, efficient administration
- Bundled with UniKix Transaction Processing Environment software

## Enhanced resource monitoring and management

High-volume transaction processing requires efficient system resource utilization to support the concurrent processing needs of large user populations. Dynamic information describing the operational efficiency and performance of a transaction processing system is required by system operators and administrators for effective tuning and optimization.

## Extending the value of massive concurrent processing applications

UniKix™ Manager software provides a graphical window into UniKix™ Transaction Processing Environment (TPE) regions, allowing users to clearly view and monitor system events. UniKix Manager software's easy-to-use interface provides centralized, real-time information for determining system status, processing rates, potential bottlenecks, and configuration enhancements that can aid in ensuring performance levels and user response times.

## Flexible management preferences

A comprehensive software monitoring tool, UniKix Manager technology provides detailed real-time information on all aspects of UniKix TPE software operations. UniKix Manager software monitors and reports on a wide range of parameters, including region name, running status, CPU usage, current transaction rate per second, total number of transactions executed, number of transaction classes for a given region, number of transaction servers for a given region, total user processor time per CPU, and number of users connected to a region.

## Intuitive graphical user interface

The UniKix Manager software graphical user interface (GUI) presents information in an organized, intuitive hierarchical display. The graphical interface provides easy access to an overview screen as well as system, resource, and communication information, organized under tabs as shown in Figure 1 and as detailed below:

- The Overview tab provides general information about the region, such as the region name, start date, version, and status
- The System tab shows performance and other system-level information specific to a region, including transaction rates, number of users, active

UniKix Manager software displays detailed UniKix TPE region information in an organized, hierarchical format.

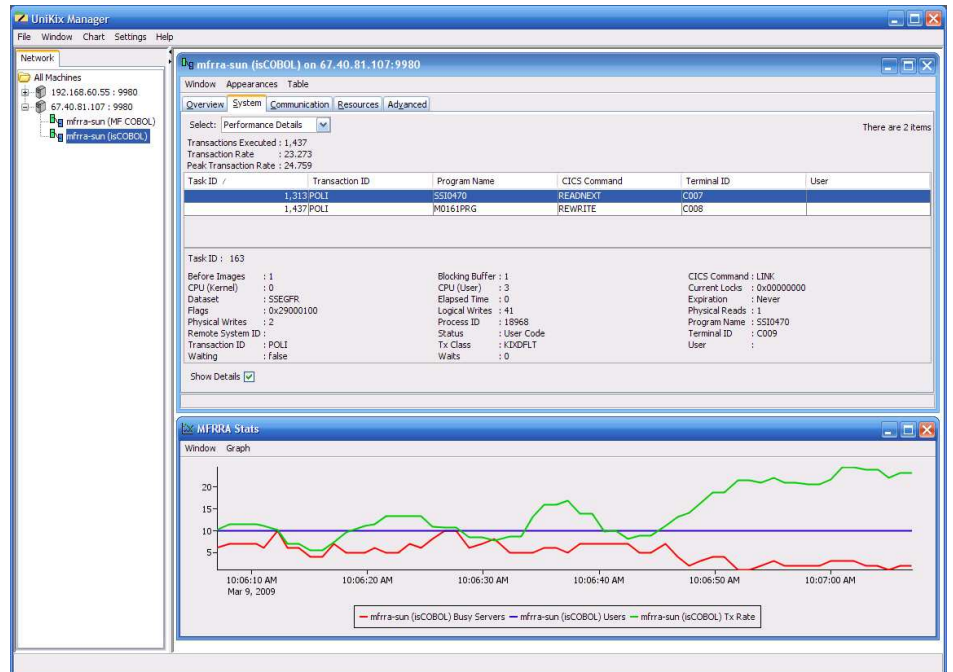


Figure 1. Sample UniKix Manager Software Screenshot

- processes, recovery data points, batch settings, allowed program languages, and configuration limits
- The Communications tab provides information about the region's communications servers, including which communication servers are configured, the total kernel processor CPU time used by this server, and the maximum number of concurrent inbound ISC requests that will be accepted by the region
- The Resources tab shows information about the resources configured for the region, such as programs, maps, and transactions
- The Advanced tab displays information primarily used by service personnel for system diagnosis

### Maximizing performance, availability, and efficiency

With the ability to run anywhere on the network, the UniKix Manager technology user interface is remarkably simple and intuitive to use, yet capable of handling complexity by displaying an enormous range of activities in an organized manner. UniKix Manager software's outstanding functionality and flexibility assists in maximizing performance and availability while minimizing bottlenecks, allowing organizations to make the most of their online transaction processing systems.

### Comprehensive legacy investment and modernization solutions

UniKix Manager software delivers comprehensive, real-time information monitoring of legacy transaction processing on open systems. When considering a migration project, both the path to obtain the desired target environment and the destination are equally as important. With UniKix Manager software, mainframe application investments can be safely leveraged on open systems, resulting in a highly manageable and well-supported platform moving forward.

UniKix Manager software is part of a larger suite of migration and modernization offerings from Clarity that enhance, extend, and transform legacy assets. Clarity recognizes that companies have significant investments in core applications and procedures and provides a wealth of low risk, high value solutions to reduce IT costs without sacrificing functionality and service level agreements.

Find more details about these solutions at [www.clarity.com](http://www.clarity.com).

## About Clerity

Clerity is a leading full-service provider of legacy migration, modernization, and optimization solutions. Drawing from over 16 years of experience, Clerity recognizes that companies have significant investments in core applications and procedures and provides a wealth of low risk, high value tools, technology, and services to reduce IT costs without sacrificing current functionality and service level agreements. Headquartered in Chicago, Illinois with offices worldwide, Clerity has customers in all in major countries, including some of the largest financial services ISVs and Fortune-class end users.

Learn how Clerity can provide an evolutionary path forward for your application and data environments at [www.clerity.com](http://www.clerity.com).



9930 Derby Lane, Suite 202 • Westchester, IL 60154  
Phone 1-888-2-REHOST (or 1-630-981-6100)

© 2010 Clerity Solutions, Inc. All rights reserved. Clerity and UniKix are trademarks, or registered trademarks, of Clerity Solutions, Inc. in the United States and other countries.

All other marks are the property of their respective owners.